



CONSULTMECH

Mechanical Engineers

COMPANY PROFILE

CONSULTING ENGINEERS SPECIALISING IN
MECHANICAL BUILDING SERVICES



**HVAC
SERVICES**



**FIRE
SERVICES**



**WET
SERVICES**



**PETROCHEMICAL
SERVICES**



**LIFTS
SERVICES**



**EVENTS
SAFETY
SERVICES**

TABLE OF CONTENTS

1. INTRODUCTION	-	PAGE 3
2. COMPANY TEAM	-	PAGE 4
3. COMPANY ORGANOGRAM	-	PAGE 5
4. PROFESSIONAL MEMBERSHIPS AFFILIATIONS	-	PAGE 6
5. BLACK ECONOMIC EMPOWERMENT	-	PAGE 6
6. PROFESSIONAL INDEMNITY INSURANCE	-	PAGE 6
7. PROJECT EXPERIENCE (BETWEEN 199 TILL 2010)	-	PAGE 7
8. CONSULTMECH PROJECTS EXPERIENCE SINCE 2010	-	PAGE 8
9. SHOPPING CENTRE EXPERIENCE	-	PAGE 10
10. EVENTS SAFETY	-	PAGE 10

1. INTRODUCTION

Consultmech was started in 2010 and has experienced exceptional growth during the past 10 years and we managed to build a sustainable practice employing 13 Permanent employees and 3 temporary staff.

We have a proven track record for completing challenging assignments and pride ourselves on our engineering ability and specialized expert knowledge in the field of Mechanical Engineering Building Services across all sectors of the market including Commercial, Residential, Governmental, Medical, Hospitality, Retail and Industrial sectors.

We are a BBBEE Level 1 company, and have professional indemnity insurance to the value of R10 million.

Table 1 - Below provides a summary of our Professional service offerings:

SERVICES OFFERINGS	BREAKDOWN OF SERVICE OFFERING
 HVAC	Air-conditioning (DX; Chilled water; VRV; Process cooling) Mechanical Ventilation (Filtered Fresh Air & Extraction & Industrial ventilation) Kitchen Canopy extract & make up air Smoke ventilation (Natural & Mechanical) Refrigeration cold & freezer rooms
 FIRE	Fire protection (Fire hose reels, Hydrants & extinguishers) Automatic sprinkler protection according to SANS & ASIB Building Evacuation & Escape route analysis Plan reviews with regard to Building regulations advice & interpretations Statutory signage for Fire Protection & Evacuation applications Rational Fire designs where the building regulations cannot be applied LPG storage & pipe reticulation drawings Gaseous Fire suppression (FM200, Novac 1230; etc.) Fire Detection systems & Public address & Evacuation systems
 WET SERVICES	Plumbing (Cold & Hot Water Reticulation) Hot Water generation plants (solar water heating systems & heat pumps) Drainage reticulation systems Rain water collection & harvesting Grey water systems (storage, filters & pumps) Black water systems (storage, filters & pumps)
 LIFTS SERVICES	Hoists & Cranes Lifts (Passengers & Goods) Dock Levelers & Scissor Lifts
 PETROCHEMICAL SERVICES	Pump & Tank for Petro stations Vapour recovery systems Fire Prevention
 EVENTS SAFETY	Event Fire Safety Planning Rational Designs for Temporary Structures & Plans Disaster Risk Management Venue Grading SASREA Certification

We also offer the following industry related services:

- Due diligence inspections and reports associated with property purchases and transfers
- Administering and supervision of repair and maintenance contracts
- Performance and Energy system analyses, improving system efficiencies and reducing operating cost
- Reverse engineering, producing As Built layouts and specifications for existing installations where no information is available
- Compilation of asset registers

2. CONSULTMECH TEAM

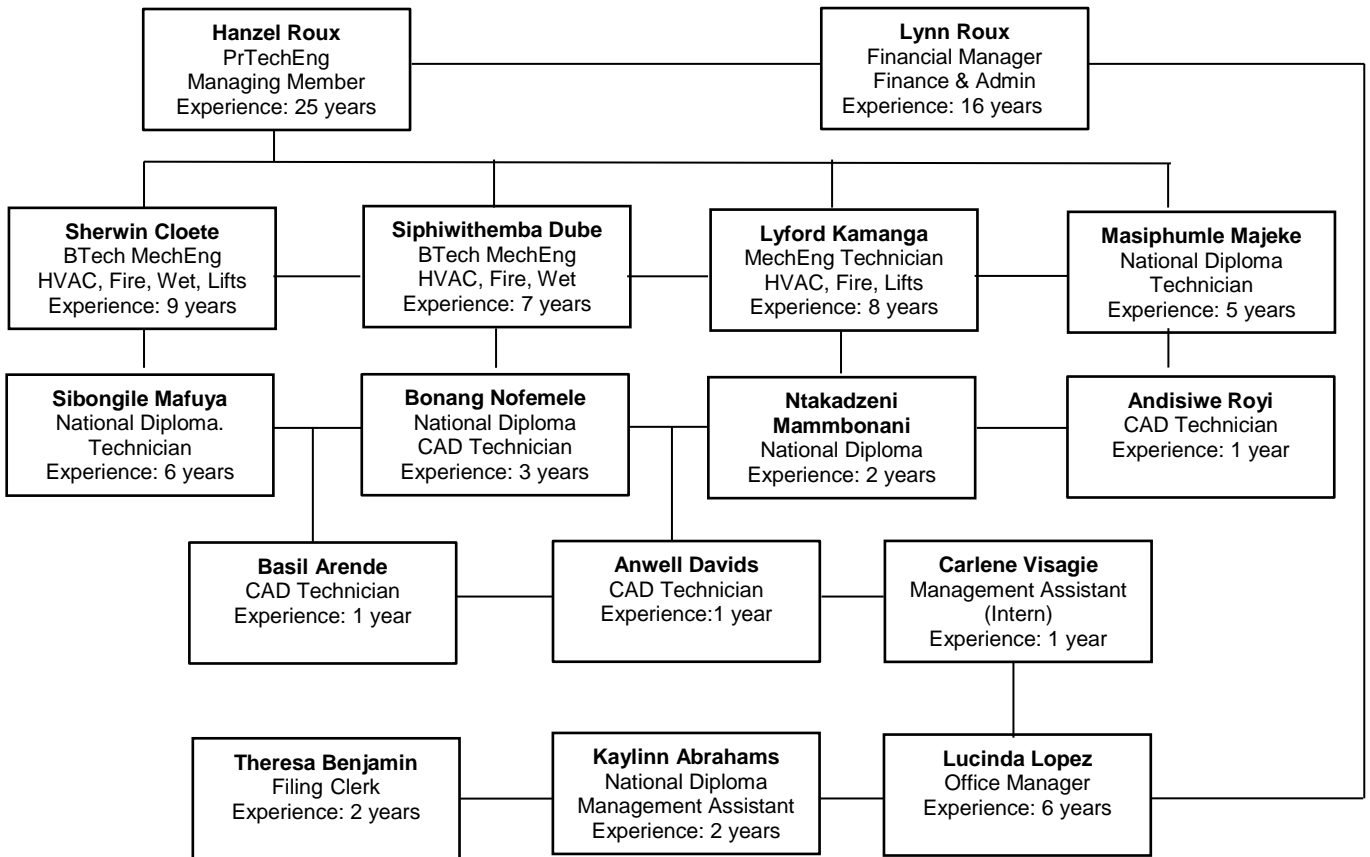
All project assignments are completed by a dedicated team consisting of Engineers, Technicians and Administration staff. Our team consists of 13 permanent staff and 3 temporary staff with a combined industry experience exceeding 114 years.

Table 2 - Below confirms the qualifications & job function of all staff:

FUNCTION	STAFF MEMBER AND QUALIFICATION
Members & Management	HANZEL ROUX PrTechEng ECSA No: 201070151 25 years' experience in Mechanical Building Services; specializing in Mechanical Building Services with extensive experience in Air Conditioning; Mechanical Ventilation; Fire Protection and Rational Fire; Plumbing and Drainage; Lifts and Escalators
	LYNN ROUX - Financial Manager 16 years' experience in Finance and Administration
Administration	LUCINDA LOPEZ - National Diploma - Business Management - Office Manager
	KAYLINN ABRAHAMS - National Diploma - Management Assistant
	THERESA BENJAMIN - Filing Clerk
Project Engineers	SHERWIN CLOETE - BTech - Mechanical Engineering ECSA No: 201280382
	SIPHIWITHEMBA DUBE - BTech - Mechanical Engineering ECSA No: 201520598
	NTAKADZENI MAMMBONANI - National Diploma - Mechanical Engineering
Design Technician	LYFORD KAMANGA - National Diploma - Mechanical Engineering
	SIBONGILE MAFUYA - National Diploma - Mechanical Engineering
	MASIPHUMLE MAJEKE - National Diploma - Mechanical Engineering
CAD Technician	BONANG NOFEMELE - National Diploma - Mechanical Engineering
	ANDISIWE ROYI - S4 - Mechanical Engineering
Internship Students	CARLENE VISAGIE - N6 - Management Assistant
	BASIL ARENDSE - S4 - Mechanical Engineering
	ANWELL DAVIDS - S4 - Mechanical Engineering

3. COMPANY ORGANOGRAM

Below find a diagram indicating the company structure with roles, years' experience and qualifications:



2020 STAFF PICTURE:



4. PROFESSIONAL MEMBERSHIP:

Below find table 3 confirming memberships and affiliations of industry organizations:

ORGANIZATION ABBREVIATION	NAME	MEMBERSHIP NO:
ECSA	Engineering Council of South Africa	201070151
SAIRAC	South African Institute of Refrigeration & Air-conditioning	3844
PSIRA	Private Security Industry Regulating Authority	1969032
LIAISA	Lift Inspectors Association of South Africa (Member	166
IMESA	Institute of Municipal Engineers of Southern Africa	R3365
NSBE	National Society of Black Engineers of South Africa	200610578
SAPOA	South African Property Owners Association	SAP-CON010
SAICE	South African Institution of Civil Engineering	201800674
IFE	Institution of Fire Engineers	63907
IPET	Institute of Professional Engineering Technologist	3686 M
SACSC	South African Council of Shopping	14318
CESA	Consulting Engineers of South Africa	1142
SFPE	Society of Fire Protection Engineers	
GBCSA	Green Building Council of South Africa	

MEMBERSHIP AFFILIATION LOGO'S:



5. BLACK ECONOMIC EMPOWERMENT:

We are a BBBEE level 1 (135% B-BBEE procurement recognition level).

6. PROFESSIONAL INDEMNITY INSURANCE:

We have professional Indemnity insurance cover to the value of R10 million as provided by AC&E.

7. PROJECT EXPERIENCE (1996 TILL 2010):

Summary of our project experience while working for other consulting practices between 1996 till 2010:

PROJECT NAME	CLIENT	SERVICES
1. Commercial/ Office Building:		
Desmond Tutu Peace Centre - CBD	Desmond Tutu Peace Trust	Fire
National Mutual Building - CBD	Department of Public Works	Fire
Dorsic House - Kenilworth	Press Less	HVAC, Fire, Wet
91 on Main -Claremont	New Property Ventures	Wet, HVAC
Claremont Central - Claremont	New Property Ventures	Wet, HVAC
Regis House - CBD	Zenprop Development	HVAC
School of Government - Bellville	University of the Western Cape	HVAC
Jakaranda Centre	Jakaranda Centre	Lift Installation
Toyota Bellville	Toyota	HVAC and Fire Installation
2. Residential:		
V&A Marina - Juliette Building	V&A Marina Developments	HVAC
50 Strathmore Lane - Camps Bay	Apex Project Managers	HVAC
V&A Marina - Kylemore Building	V&A Marina Developments	HVAC
Rockwell - Greenpoint	Gain Property Developers	Wet, HVAC, Fire, Lifts
Intaba - Claremont	Property Partners	Wet, HVAC, Fire, Lifts
Belhar Residence Block	University of the Western Cape	HVAC
Freedom Square Residence - Repairs	CPUT	HVAC
Summer club, Somerset	Somerset Developments	HVAC installation and Hot Water generation
3. Governmental:		
Salamander Boat Park	Department of Public Works	HVAC, Wet, Fire, Lifts
Gordons Bay Harbor	Department of Public Works	Lifts
Bishop Lavis Police Station - Revamp	Department of Public Works	HVAC, Wet, Fire, Lifts
4. Retail / Shopping Centre:		
Canal Walk Shopping Centre	Monex Development	HVAC
Mountain Mill - Worcester	Retail Africa	HVAC
Cobble Walk - Durbanville	Gain Property Developers	HVAC
Zevenwacht Mall - Kuilsriver	Zenprop Development	HVAC
Pick 'n Pay - Various Stores	Pick 'n Pay	HVAC
Shoprite - Various Stores	Shoprite Properties	HVAC
Woolworths - Various Stores	Woolworths Properties	HVAC
MetLife Mall - King Williams Town	Metropolitan Properties	HVAC, Wet, Fire
5. Hotels:		
Inn on the Square - Cape Town	Hotel Property Fund	Fire, Wet
Victoria Junction - Greenpoint	Hotel Property Fund	Fire
Breakwater Lodge - Greenpoint	Breakwater Lodge	HVAC
6. Medical Centers:		
Karl Bremer Hospital	Department of Health	Fire, Wet
Vredendal Ambulance Station	Department of Health	Fire, Wet, HVAC
Lamberts Bay Ambulance Station	Department of Health	Fire, Wet, HVAC
Tygerberg Hospital - School of Dentistry	University of the Western Cape	HVAC
Somerset Hospital - Emergency Centre	Department of Health	HVAC, Wet, Fire
7. Industrial:		
Chevron Field Reliability Centre	Chevron South Africa	HVAC, Fire, Wet
Grahams Pharmaceuticals	GRP	HVAC, Fire, Wet
Environ Cosmetic Factory - Parow	Environ	HVAC, Fire

8. CONSULTMECH PROJECT EXPERIENCE:

List of completed projects since 2010:

PROJECT NAME	CLIENT	SERVICE OFFERED / INVOLVEMENT	CONTRACT VALUE
1. Hotels:			
Inn on the Square Hotel	Hotel Property Fund	Central Hot Water Plant	R 300,000
Inn on the Square Hotel	Hotel Property Fund	Rational Fire Protection	R250,000
Victoria Junction Hotel	Hotel Property Fund	Rational Fire & Protection	R300,000
Cape Grace Hotel	Cape Grace Hotel	Fire, HVAC	R500,000
2. Retail:			
Pavarotti's - Zevenwacht	Zenprop Development	HVAC	R250,000
The Palms Pub & Grill	The Palms	Mechanical Ventilation	R100,000
Zevenwacht Line shops	Zenprop Development	HVAC	R200,000
MetLife Mall, King Williams Town	Metropolitan Properties	HVAC, Fire, Wet, Lifts	R14,200,000
Gillwell Shopping Centre	Eris Property	Fire	R15,500,000
Strand Concourse	City of Cape Town	Fire, HVAC	R10,000,000
Mzoli Shopping Centre	Mzoli Properties	HVAC, Fire, Wet, Lift	R2,800,000
BP / Pick 'n Pay Conversions	BP South Africa	Fire, HVAC, Wet	R10,000,000
Cavendish Square -Tenancies	Old Mutual Properties	Fire, HVAC	R3,000,000
V&A Waterfront -Various	V&A Waterfront	Fire, HVAC	R10,000,000
V&A South Facility	V&A Waterfront	Fire	R1,000,000
H&M Cavendish Square	H&M	Fire	R2,500,000
MRP Cavendish Square	MRP	Fire	R1,500,000
Old Mutual Office Cavendish	Old Mutual	Fire	R1,000,000
Hamleys Store V&A Waterfront	Hamleys	Fire, HVAC	R1,000,000
V&A Waterfront North Wharf	V&A Waterfront	Fire, HVAC	R3,000,000
Harbour Bay Mixed use retail& residential		Fire & Wet	R3,000,000
3. Office Buildings:			
Union Castle Building	Zenprop Development	HVAC, Fire	R3,000,000
Triton Express	Zenprop Development	HVAC	R3, 500,000
Old Mutual Office Cavendish	Old Mutual	Fire	R1,000,000
Civic Centre - Refurbishment	City of Cape Town	HVAC, Fire	R3,000,000
Mortimer Toyota Vredenburg	Mortimer Bester	Fire	R900,000
School of Pharmacy	University of the Western Cape	HVAC, Fire	R1,200,000
Economics and Management Services	University of the Western Cape	HVAC	R250,000
Campus Protection Services	University of the Western Cape	HVAC, Fire	R300,000
Senate	University of the Western Cape	HVAC, Fire	R150,000
School of Public Health	University of the Western Cape	HVAC maintenance	R290,000
Performance Brands	First Accent	Fire	R2,500,000
Union Castle Building -Phase2	Truzen Trust	HVAC, Fire	R4,000,000
Granary Building	City of Cape Town	Fire, HVAC	R3,000,000
ESKOM Dnynefontein	ESKOM	Fire, HVAC	R4,000,000
SANBI Kirstenbosch New Admin	SANBI	Fire, HVAC	R3,000,000
City of Cape Town 033C Tender	City of Cape Town	Fire, HVAC	R10,000,000
Preston Guild Investments	Preston Guild Investments	HVAC, Fire, Wet	R3,000,000
69 Voortrekker, Maitland	Life Properties	Fire, HVAC and Wet	R7,000,000
10 Caxton, Woodstock	Life Properties	Fire, HVAC and Wet	R6,000,000
210 Main Road	WTM	Fire, HVAC	R2, 000, 000

4. Medical Centers:			
Melomed Hospital	Melomed Group	Fire, Wet	R5,000,000
M-Care N1 City	M-Care Group	Fire	R300,000
Schonenberg Retirement Village & Frail Care	Schonenberg Retirement	Fire, HVAC	R1,200,000
M-Care Pinelands	M-Care Group	Fire, HVAC	R600,000
West Beach Clinic	Life Path	Fire, HVAC	R900,000
Gouda Clinic	PGWC	Fire, HVAC and Wet	R2,000,000
Masincedane Clinic	City of Cape Town	Fire, HVAC and Wet	R3,000,000
Paarl CDC Hospital	TUSK	Fire, HVAC and Wet	R10,000,000
2 Military Hospital	Department of Public Works	Fire, HVAC and Wet	R200,000,000
Rust en Vrede Hospital	Rust en Vrede	Fire, HVAC and Wet	R2, 000, 000
Bonnivale EMS	TUSK	Fire, Wet	R500, 000
5. Industrial:			
Total Gaz Kimberley	TotalGaz South Africa	Fire	R1,200,000
Chevron Laboratory	Chevron South Africa	HVAC	R600,000
Pool Water Heating	University of the Western Cape	Central Hot Water Plant	R600,000
Electrical Substations	City of Cape Town	Vent, Fire	R900,000
EnviroServ Recycling	EnviroServ	Fire	R800,000
Electrical Substations	City of Cape Town	Vent, Fire	R900,000
Spray Parks	City of Cape Town	Wet	R2,100,000
Tiger Brands Pouch Baby	Tiger Brands	Fire, HVAC	R790,000
Xingtong Steel	Xingtong Steel (Pty) Ltd	Fire, HVAC	R1,000,000
Fitzmaurice Avenue	Growthpoint	Fire, HVAC	R2,000,000
Cape Town Timbers	Growthpoint	Fire, HVAC	R2,000,000
6. Warehouse:			
Oxford University Press	Oxford University Press SA	Fire, HVAC	R5,000,000
ID Logistics	Zenprop Development	Fire, HVAC	R4,000,000
Tri-Torque	Zenprop Development	HVAC, Fire	R200,000
Triton Express	Zenprop Development	HVAC	R3,500,000
Cool Wines	Cool Wines	Fire, HVAC	R5,500,000
Diplomat	Zenprop Development	Fire, HVAC	R2,500,000
Brandwacht Grape Producers	MBB Consulting	Fire	R2,500,000
7. Place of Worship:			
His People Church N1 City	His People Church	Fire	R200,000
His People Church Retreat	His People Church	Fire	R200,000
Protea Valley Family Church	Protea Valley Family Church	HVAC	R800,000
8. Military:			
Grahamstown SAI 6	Department of Public Works	HVAC, Fire, Wet	R60,000,000
9. Sports Grounds:			
Newlands Cricket Stadium	Western Province Cricket	Fire	R1,000,000
Newlands Rugby Stadium	Western Province Rugby	Fire	R1,500,000
Kenilworth Racecourse	Kenilworth Racecourse	Fire, HVAC, Events Safety	R6 000,000
Athlone Stadium	Aveng Group	Fire, HVAC, Events Safety	R4,000,000
10. Education:			
Rallim House	Garden Cities	Fire, HVAC	R1,600,000
Harmony Primary School	PGWC	Fire, HVAC	R1,500,000
Philippi High School	PGWC	Fire, HVAC	R1,300,000
Woodlands Primary School	PGWC	Fire, HVAC	R1,150,000
Kwafaku Primary School	PGWC	Fire, HVAC	R1,170,000
11. Health:			
Day Life Spa V&A Waterfront	Day Life Spa	HVAC	R1,000, 000
SOHO V&A Waterfront	V&A Waterfront	Fire, HVAC	R350,000
12. Residential:			
Kirstenhof Apartments	Naiker and Associates	Rational and Fire	R305,500
Country Club Mansions	Zhauns Properties	Fire, Wet	R2,000,000
Tokai mixed use	Aquacor	Fire, Wet, HVAC & Lifts	R70, 000,000

9. SHOPPING CENTRE EXPERIENCE:

Consultmech is the Mechanical Engineers for the following retail centers Services Involvement.

ITEM	DESCRIPTIONS OF SHOPPING CENTRE'S	SPRINKLERS	FIRE SIGNAGE & FIRE EQUIPMENT	DETECTION	EVACUATION	AIR VENTILATION
1	Cavendish Square	✓	✓	✓	✓	✓
2	V&A Waterfront	✓	✓	✓	✓	✓
3	Zevenwacht Mall	✓	✓	✓	✓	✓
4	Golden Acre	✓	✓	✓	✓	✓
5	Whale Coast Mall	✓	✓	✓	✓	✓
6	Belvedere Square	N/A	✓	✓	N/A	N/A
7	Ocean View	N/A	✓	✓	N/A	✓

10. EVENTS SAFETY:

Consultmech is the appointed Mechanical Engineer responsible for the Fire Safety at the following events:

ITEM	DESCRIPTION OF EVENT	LOCATION	DURATION
1	Cape Town International Jazz Festival	Cape Town Intervention Conventional Centre & TUTU Centre	2014 - 2020
2	Newlands Cricket Stadium	Newlands Stadium	2014 - 2016
3	MCQP	Cape Town Castle	2016 - 2017
4	Rheinmetal Denel Memorial	Macassar on site	2018
5	Nasty-C	Cape Town Castle	2018
6	Heart FM Music Festival	Newlands Cricket Stadium	2018 - 2019
7	Ultra-Music Festival.	Ostrich Ranch, Cape Town	2019 - 2020
8	Corona Music Festival	The Bungalow, Glen Country Club, Cape Town	2015 - 2020
9	Sunmet	Kenilworth Racecourse	2020

We would be grateful if you would consider us for any possible project assignments. Feel free to contact us if you require any further information.

Yours faithfully



Hanzel Roux



HVAC - Fire Protection & Rational Fire - Wet Services - Lifts

09 Plantanus Street Kuilsriver 7580

Tel: 021 903 1407/1807 | Fax: 086 249 1969 | www.consultmech.co.za

